

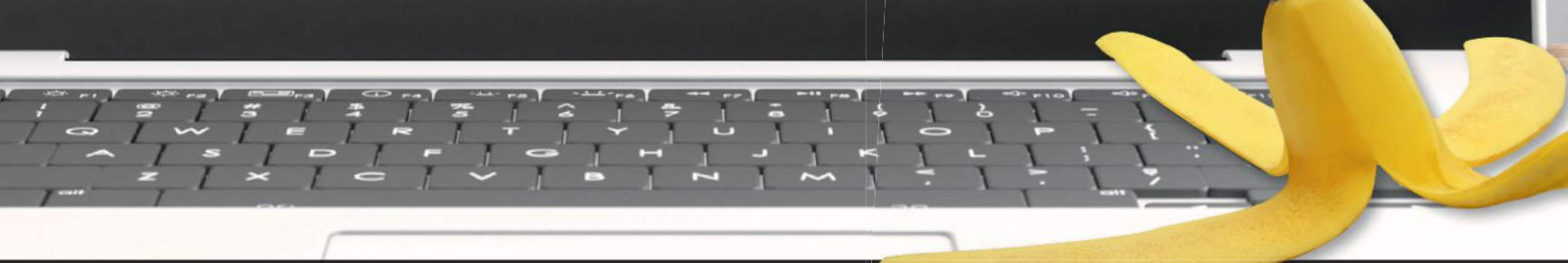
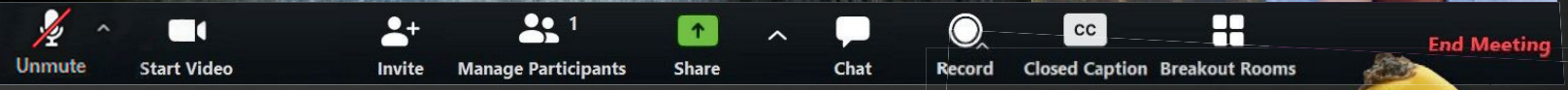
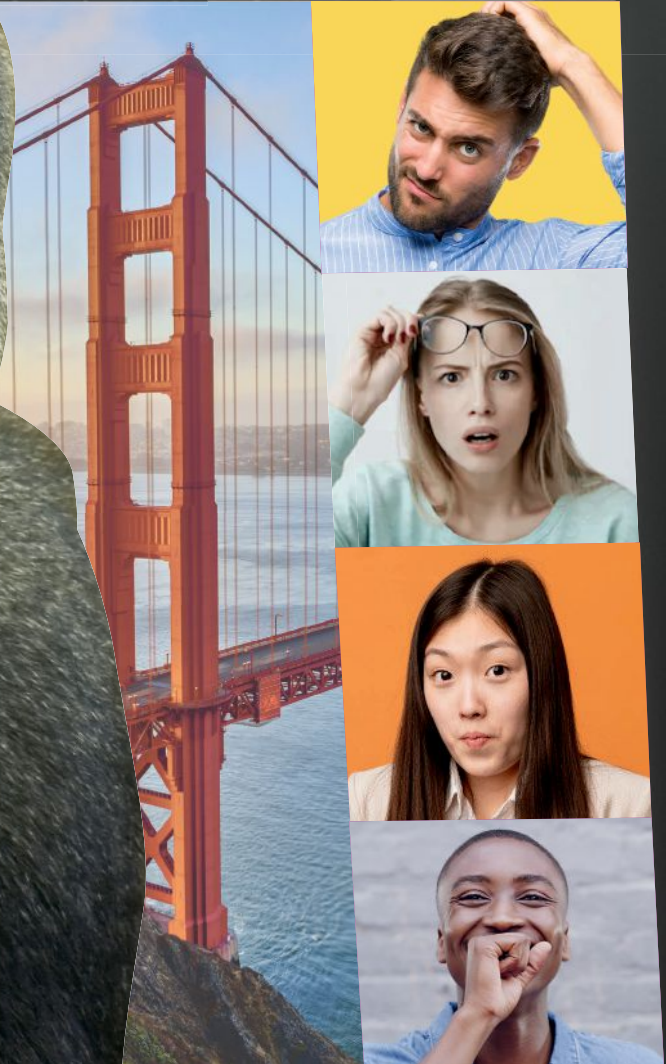
# Smart meetings

November 2020



## Beyond the 800-pound Zoom

Solving the hybrid engagement problem



**+** Arizona, Florida, New York State, Pennsylvania

A Wellness Revolution

Holiday Gift Guide



# 24

## CONTENTS

### FIRST

**14** Bright Perspective  
Reunited and it felt so good

### IQ UPDATE

**16** Dash of Smart  
Smart tips for holiday gatherings

**18** Smart Buzz  
Essential planning resources

### TOOLBOX

**20** Event Recap  
Moving forward at The Broadmoor

**22** Ravish  
Viva vegan Vegas

**24** Nip and Tuck  
Head turners, new and renewed

**26** Smart Moves  
Adam Burke takes helm at LATCB



# 22



# 84

**28** Smart Chat  
Heather Mason on strategic event science

**30** Work Smart  
Boost your social job search

**32** Meetings MBA  
Face-to-face is still king

**34** Brilliant Experiences  
An upscale virtual VIP club

**36** Healthy World  
Better than sustainable

**84** Smart Space  
Ojai Valley Inn, California

#### VOLUME NINETEEN, NUMBER ELEVEN: NOVEMBER 2020

Smart Meetings [USPS-022-632] is published monthly by Bright Business Media, LLC, 475 Gate 5 Road, Suite 235, Sausalito, CA 94965. Periodicals postage paid at Sausalito, California, and additional mailing offices. Sales, editorial and production offices located at 475 Gate 5 Road, Suite 235, Sausalito, CA 94965.  
POSTMASTER: Send address changes *Smart Meetings*, Bright Business Media, LLC, 440 Quadrangle Drive, Ste E, Boilingbrook, IL 60440 or call the circulation department at (630) 739-0900, ext. 2100 and ask for the Audience Development Department.  
PubAgree 40822090  
Canadian returns to: Station A, P.O. Box 54  
Windsor, ON N9A 6J5  
Email: [cpcreturns@wdsmail.com](mailto:cpcreturns@wdsmail.com)

# Ojai Valley Inn, California



**O**n 220 acres in a mystical valley an hour's drive from Los Angeles, this expansive property is a meetings mecca that includes The Farmhouse, a 20,000-square-foot culinary and event center; it's a barn-inspired haven with 25-foot ceilings and exposed wooden trusses. Dramatic doors nearly 12-feet high slide open to reveal The Lawn, with outdoor seating, olive trees and pops of lavender, an organic veggie and herb garden and a century-old valley oak. Nearby, Shangri-La pavilion offers 3,600 sq. ft. of event space with awe-inspiring, 180-degree views of Ojai Valley and looming mountain ranges.

Got a hot spot you'd like to submit?  
Contact [editor@SmartMeetings.com](mailto:editor@SmartMeetings.com).